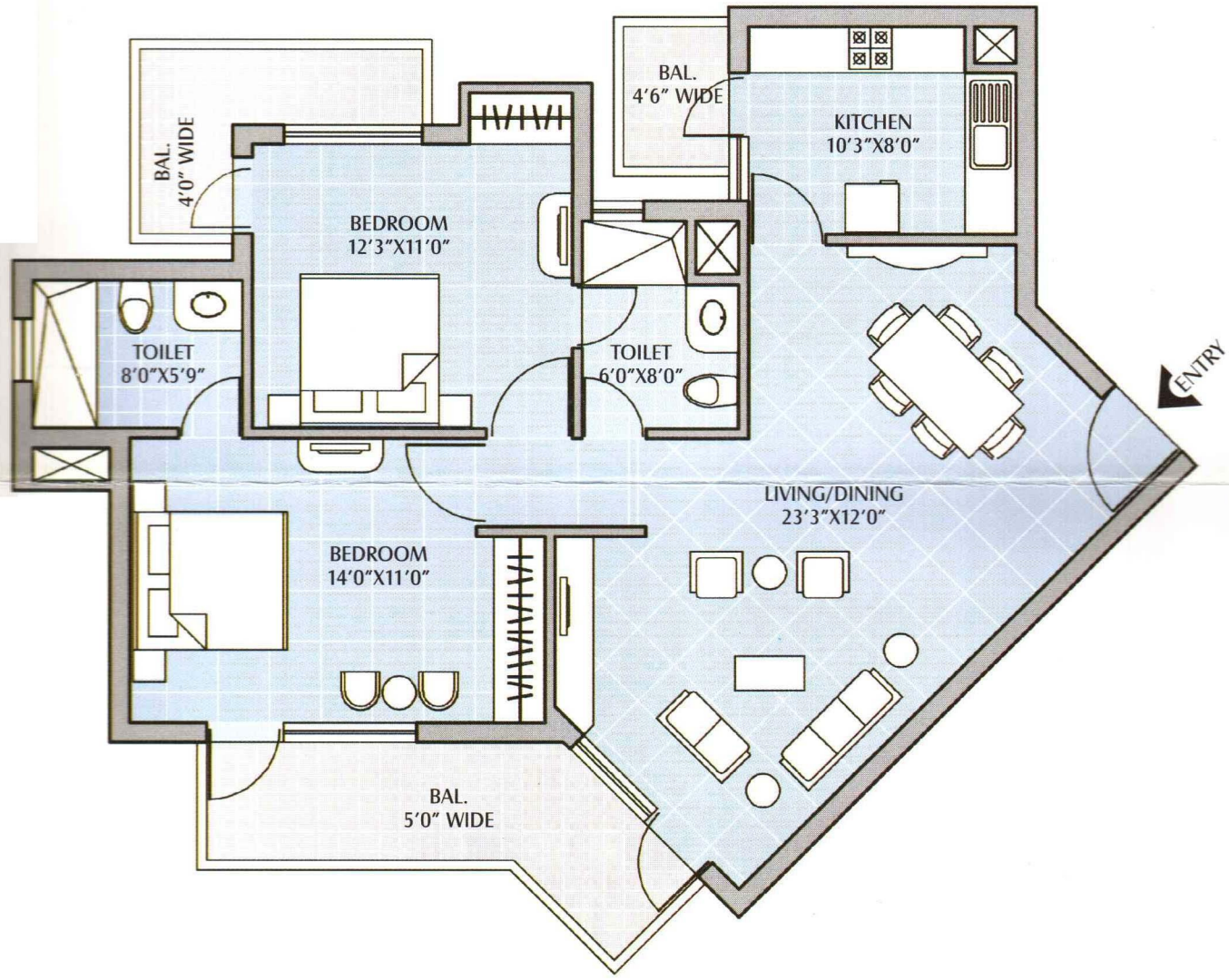
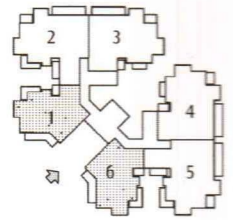


2 BED

SUPER AREA = 1325 SQFT



- T-1 01,101,901 TO 1201 & 06,106,906 TO 1206
- T-2 01,101,901 TO 1201 & 06,106,906 TO 1206
- T-4 01,101,901 TO 1201 & 06,106,906 TO 1206
- T-5 01,101,901 TO 1201 & 04,104,904 TO 1204
- T-6 01,101,901 TO 1201 & 06,106,906 TO 1206
- T-7 01,101,901 TO 1201 & 06,106,906 TO 1206
- T-8 01,101,901 TO 1201 & 06,106,906 TO 1206